

SKEW

⚡ ⚡ ⚡ JIG SYSTEMS



SKEW JIG System

The SKEW JIG System is the fully modular, rebar welding and/or tying workbench for the concrete reinforcement industry. A hardwearing assembly system on which you can first place your rebar (stirrups/ links, rings) freestanding, feed the bars through and weld or tie the element in place. All the while ensuring the perfect measurements and spacing, and proper concrete cover.

Not only does the SKEW JIG System improve quality, speed and safety, the workbench is entirely adjustable for the perfect fit for your specific reinforcement cages.

It is engineered to be a precise, ergonomic workstation for your workers and is easily accessible, even for less experienced personnel.

The SKEW JIG System is available in infinite configurations.



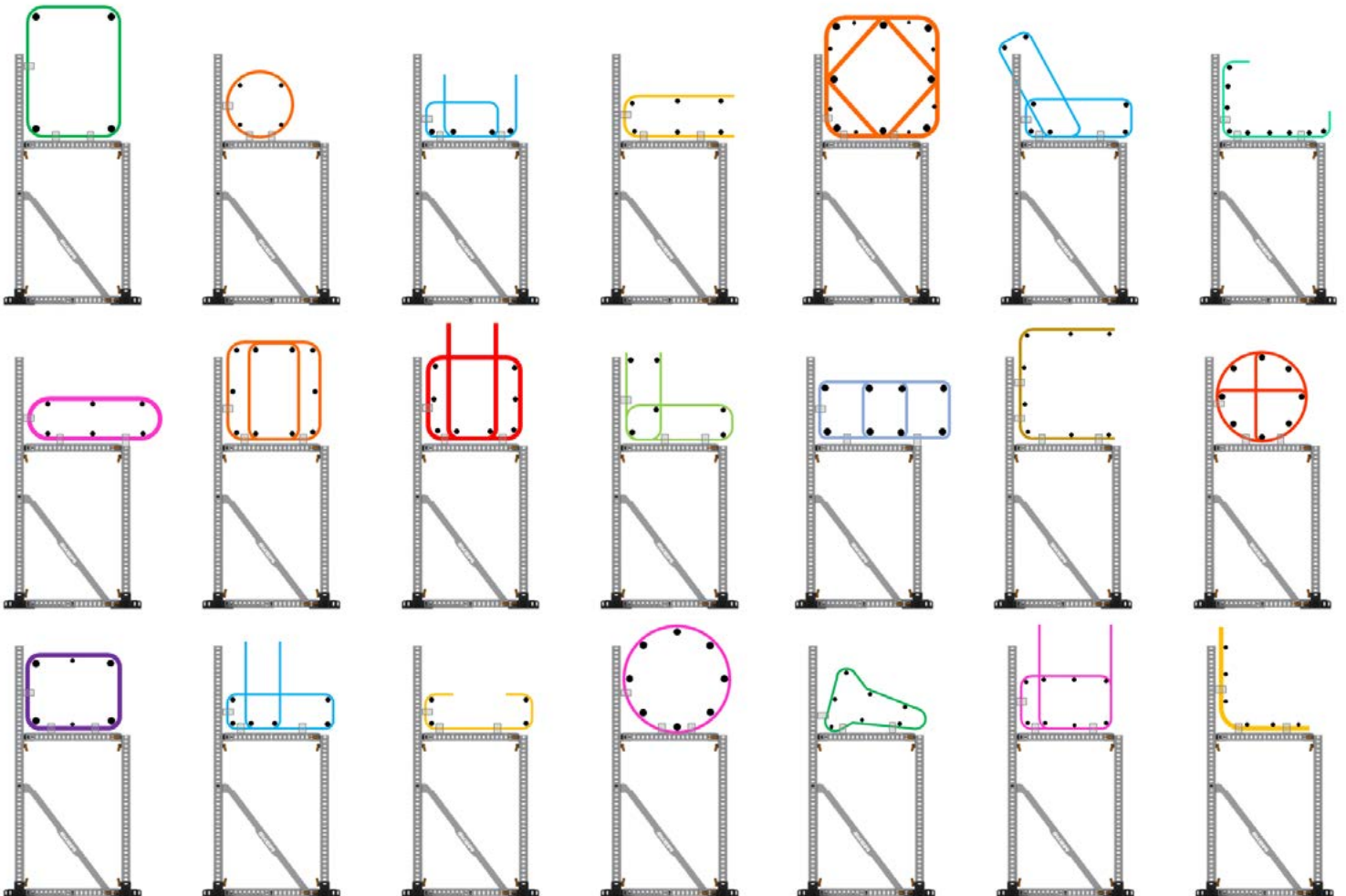
Positioning rebar on the JIG System

The SKEW JIG System is equipped with smart rebar grips to allow the stirrups, links, bars and rings to be positioned at the correct spacing.

Rebar grips are easily rearranged for placing different reinforcement shapes and sizes.



- Standard spacing: 25mm / 1"
- Standard range: \varnothing 8 to 20mm / #2 to #6
- Alternative spacing/gripping options available









Flexible JIG Parts

Our flexible JIG Parts allow you to quickly build a Setup to fit your requirements.



-  Standard JIG Parts
-  Easily assembled



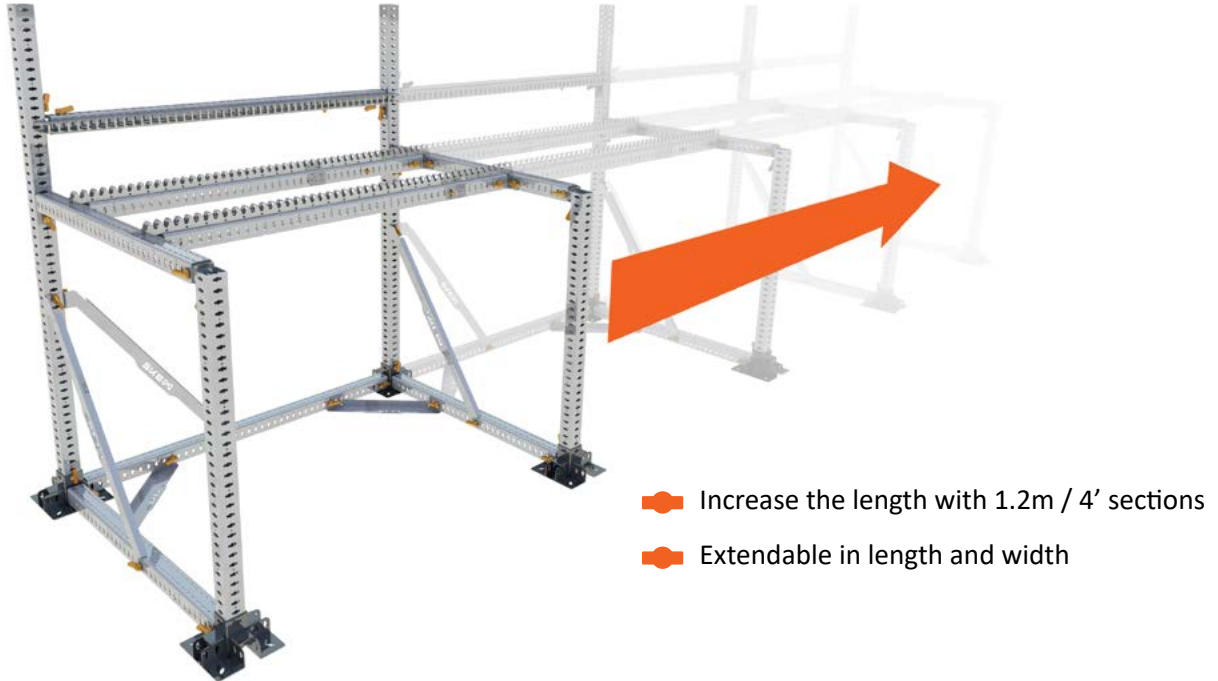
-  Quick locks (quarter turn)
-  No bolts, nuts or tooling required



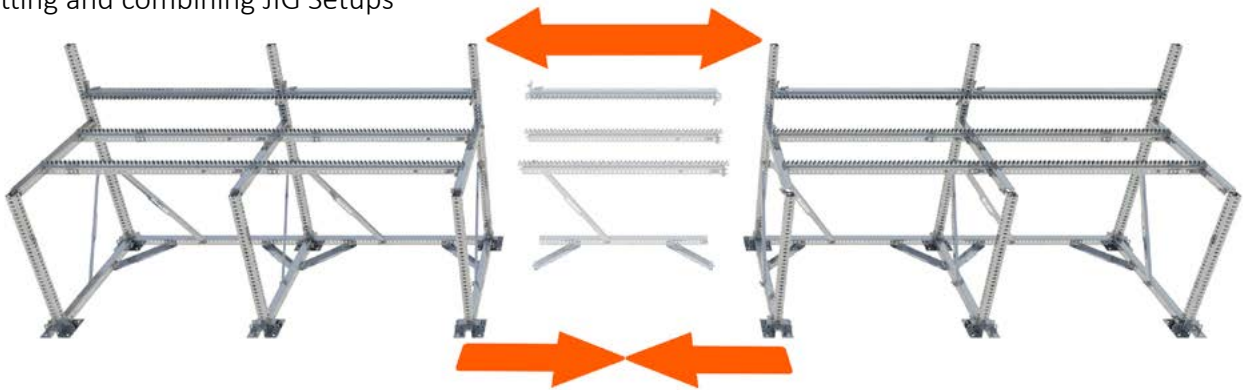
Modular JIG System

Due to its modular nature, the JIG System can be rearranged in many ways. It is easy to build, extend, split or combine JIGs. It is also possible to rebuild your JIG Setup into a completely different solution.

Extending JIG Setups by adding sections



Splitting and combining JIG Setups



Rebuilding or rearranging a JIG Setup

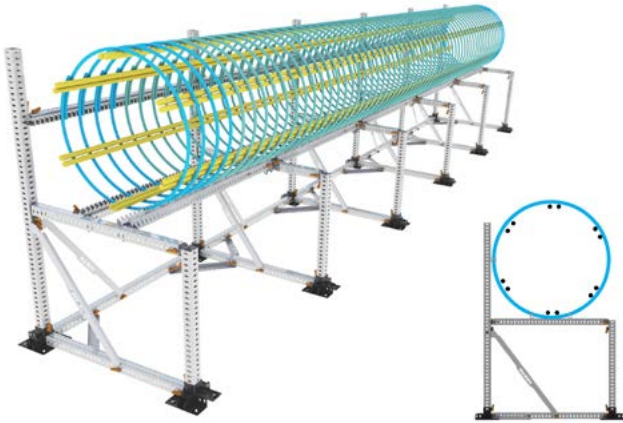


SKEW JIG- Bench Setup

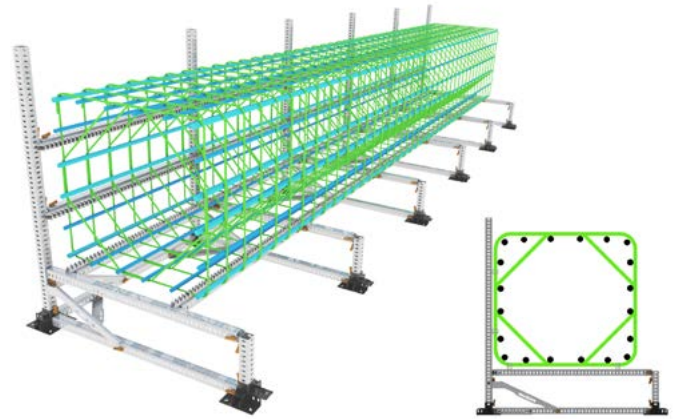
The SKEW JIG Bench Setup is typically used for reinforcement elements such as beams, pile cages and columns, either for on-site construction or the precast industry.



Bench Setup 6.0 x 0.9m (70cm working height)
 20 x 3' (2' 4" working height)



Bench Setup 6.0 x 1.2m (30cm working height)
 20 x 4' (1' working height)



Bench Setup 8.4 x 0.6m (90cm working height)
 28 x 2' (3' working height)



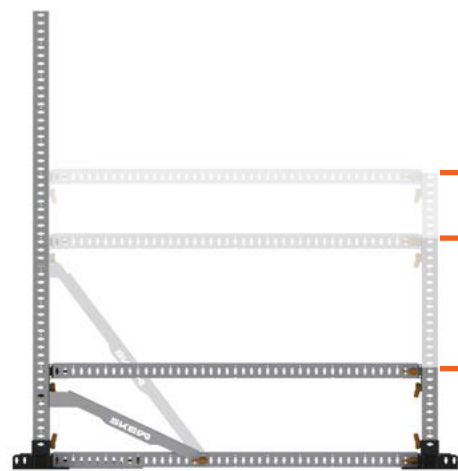
Bench Setup 4.8 x 1.8m (90cm working height)
 16 x 6' (3' working height)



Bench Setup size options:



Width: **0.6m** **0.9m** **1.2m**
2' **3'** **4'**






Height: **0.9m** **3'**
0.7m **2'4"**
0.3m **1'**

Length: **1.2m / 4' long JIG sections**


SKEW JIG- Bench Setup Options

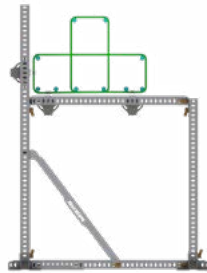
The Bench Setup can be customized for specific reinforcement element requirements.


-  Alternative spacing/gripping options available
-  Positioning components for additional reinforcement layers
-  Ergonomic add-ons: Tools, Roller Systems and Clamps

Rotatable Connectors


Rotatable Connectors allow the rows of teeth to be set in different orientations.

 Standard Bench arrangement




 Arrangement for round rings and radius elements



 Arrangement for smaller stirrups and ligs



 Arrangement for smallest stirrups (45 degrees)





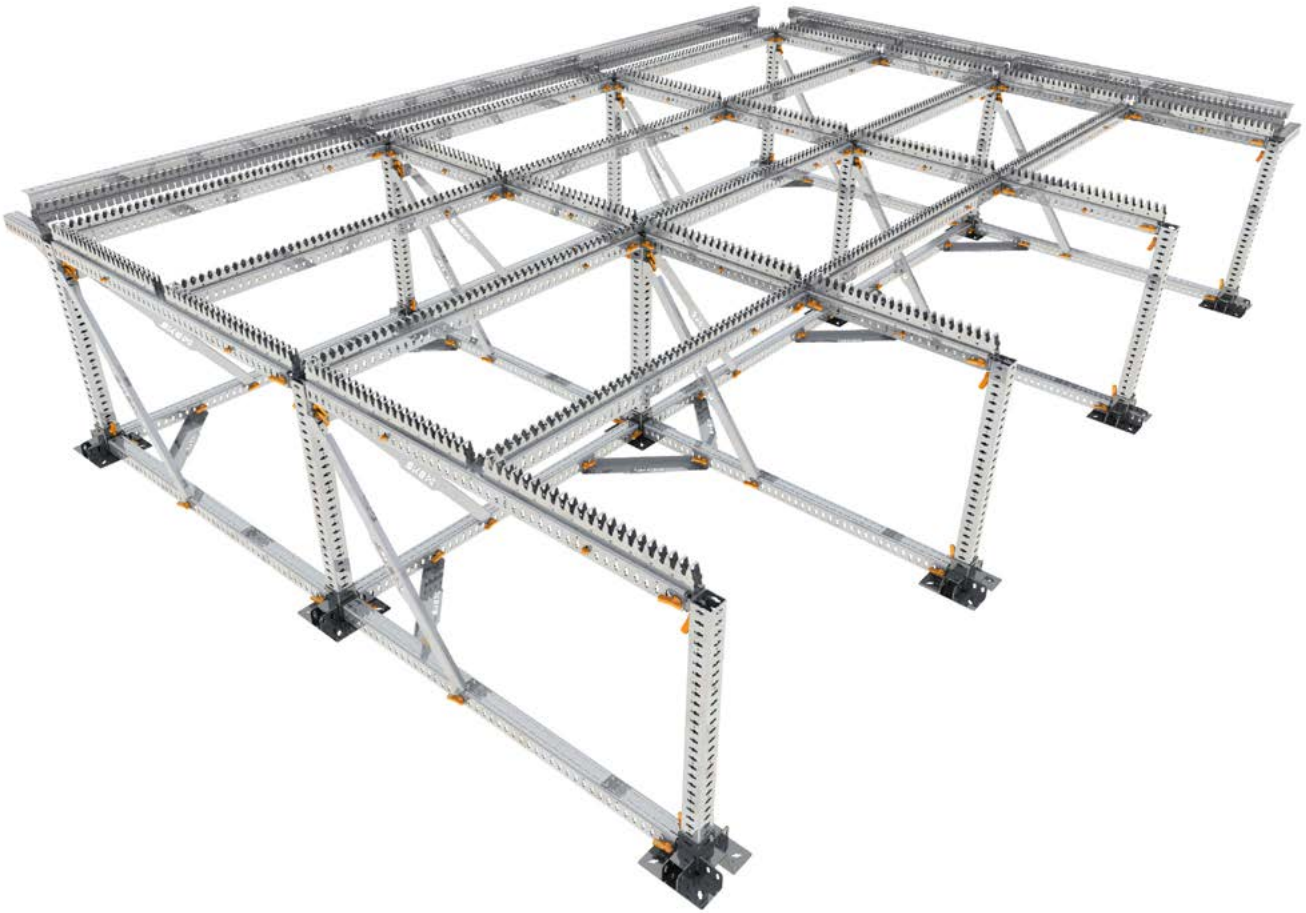
REBAR CLAMP

The Rebar Clamp gives you an extra hand, for temporarily holding the rebar in place before tying or welding.

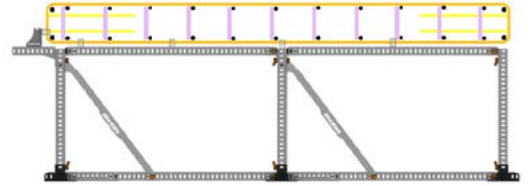
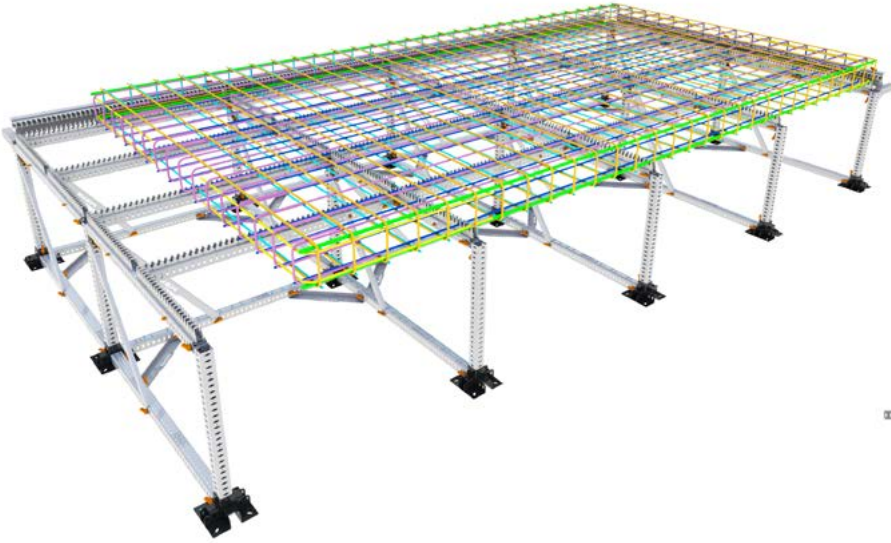


SKEW JIG- Table Setup

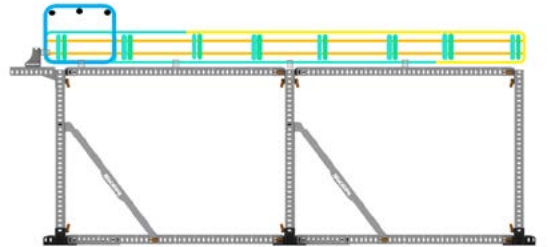
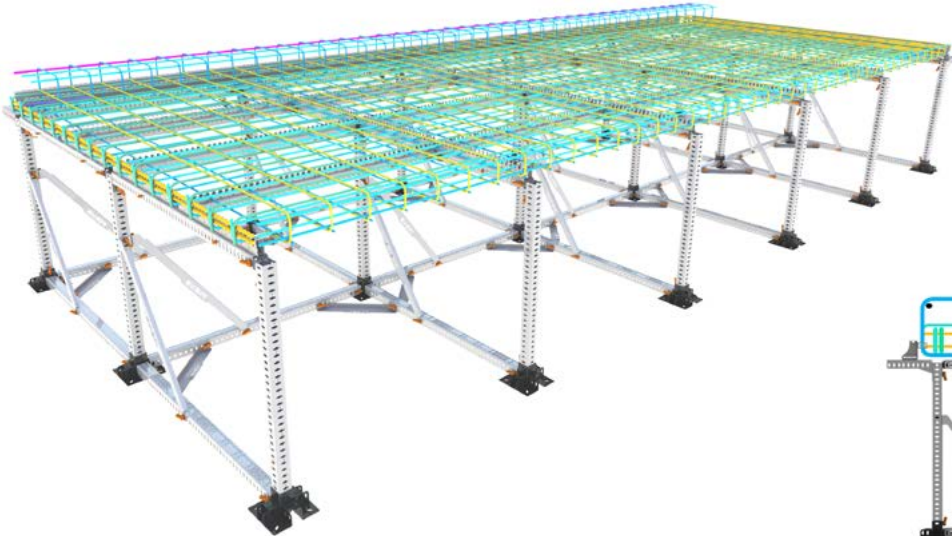
The SKEW JIG Table Setup is suitable for flat elements and larger surfaces. The Setup allows positioning of reinforcement in perpendicular directions. It is most commonly used for mesh shapes, precast balcony elements, panels, wall elements etc.



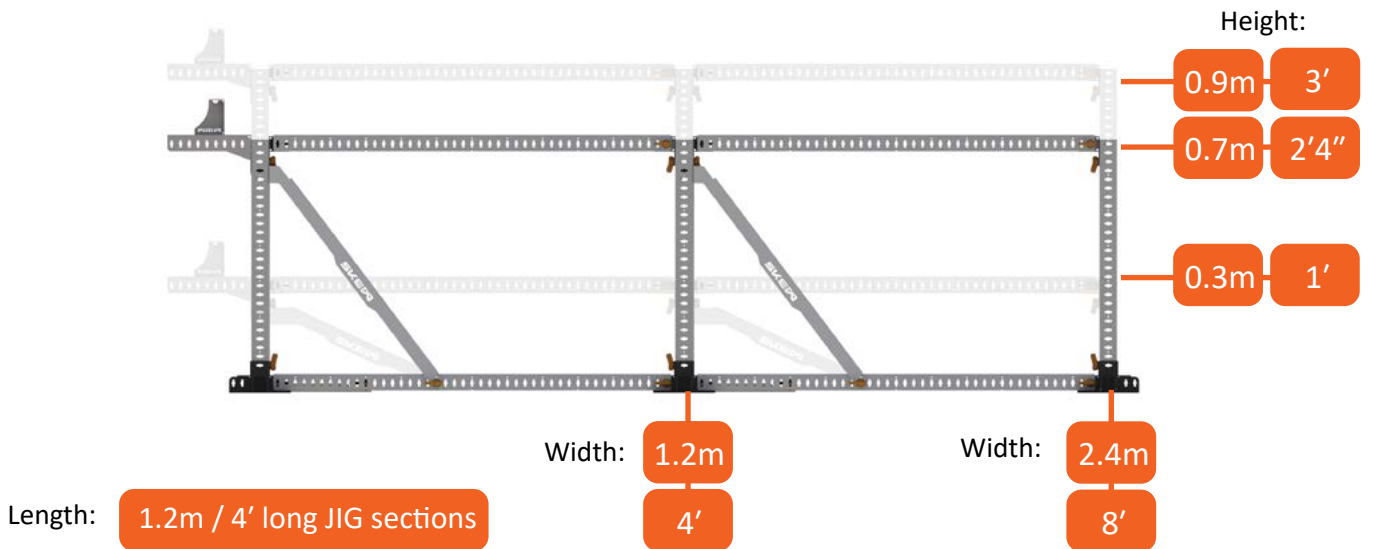
■ Table Setup 4.8 x 2.4m (70cm working height)
 16 x 8' (2' 4" working height)



■ Table Setup 6.0 x 2.4m (90cm working height)
 20 x 8' (3' working height)

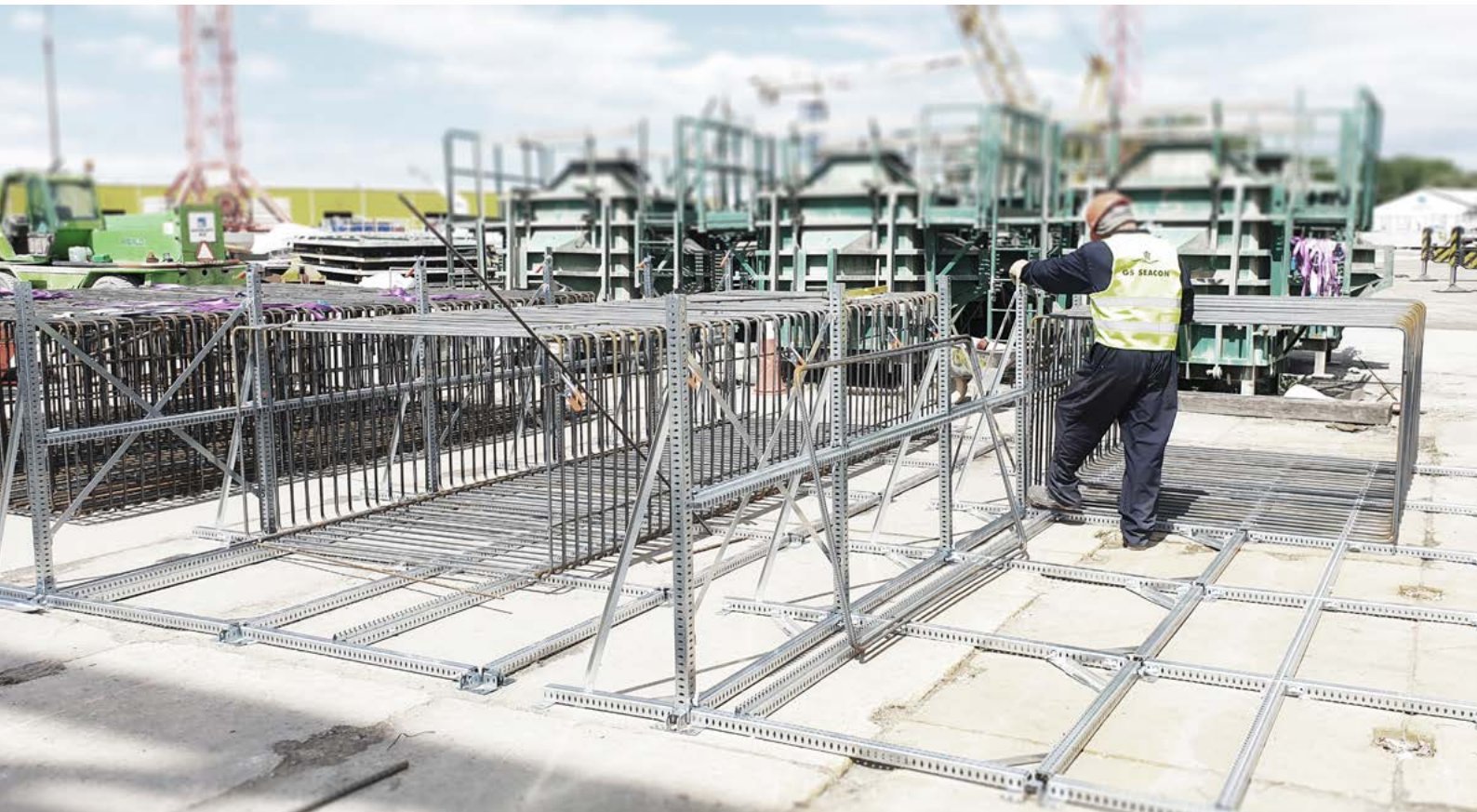
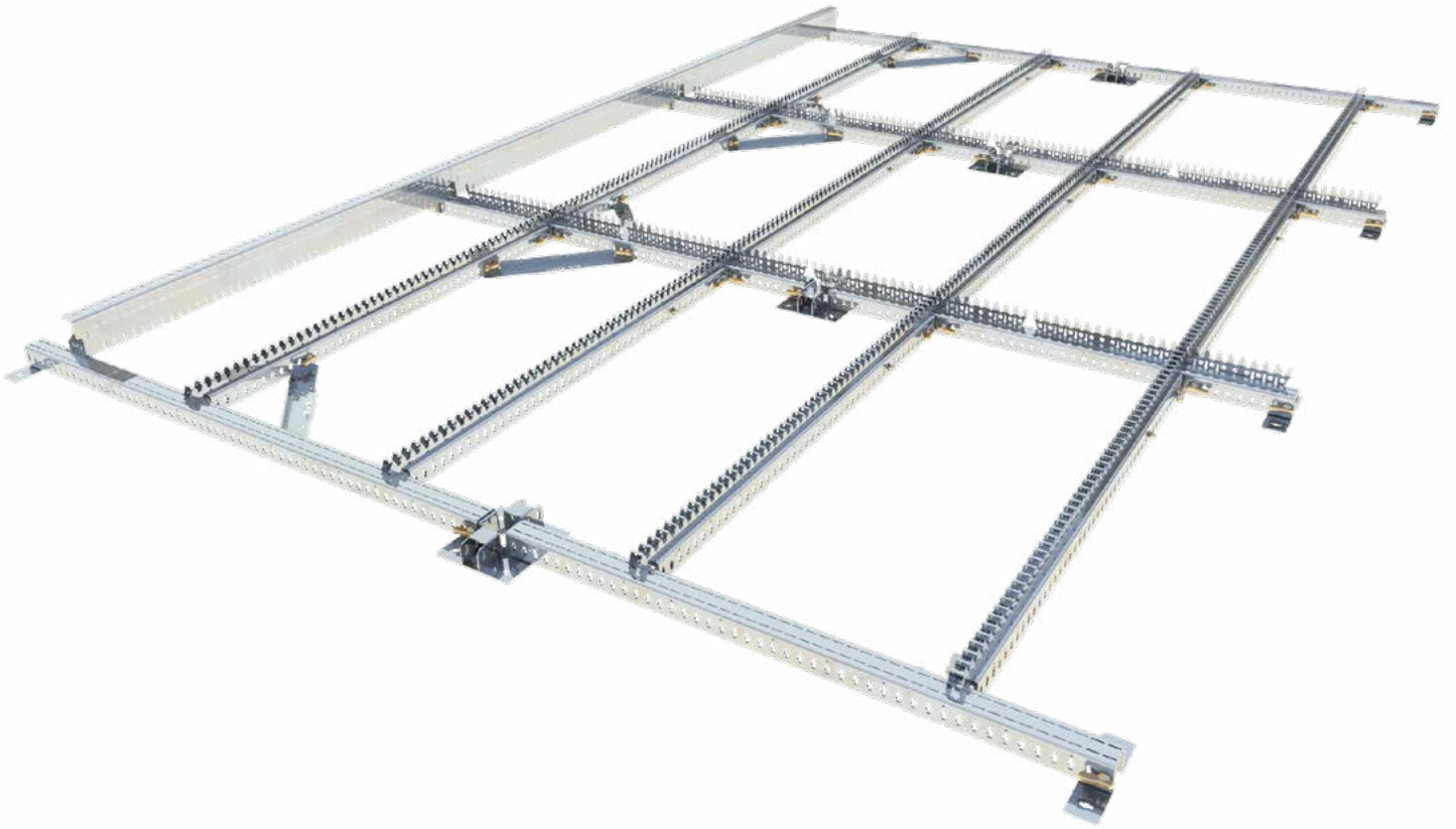


■ Table Setup size options:

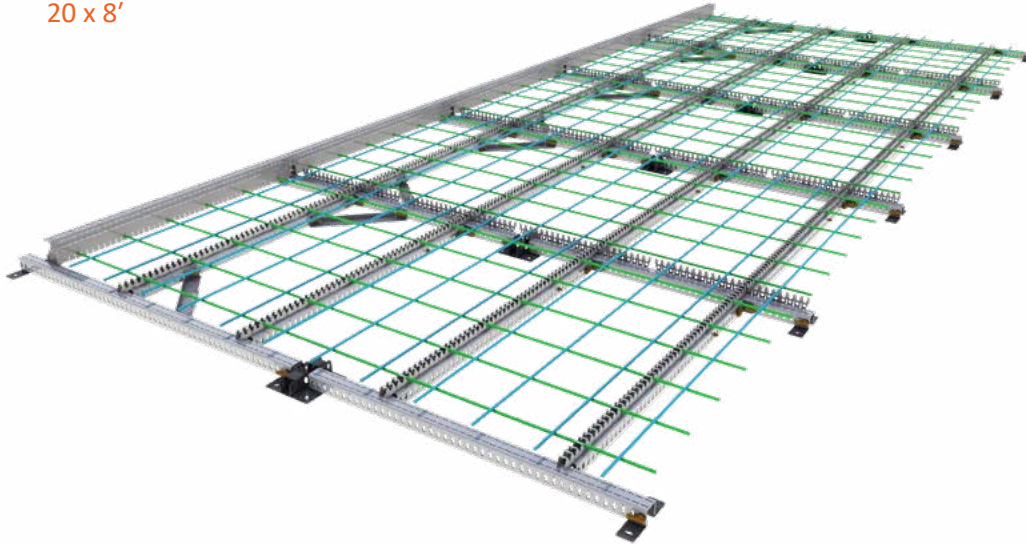


SKEW JIG- Floor Setup

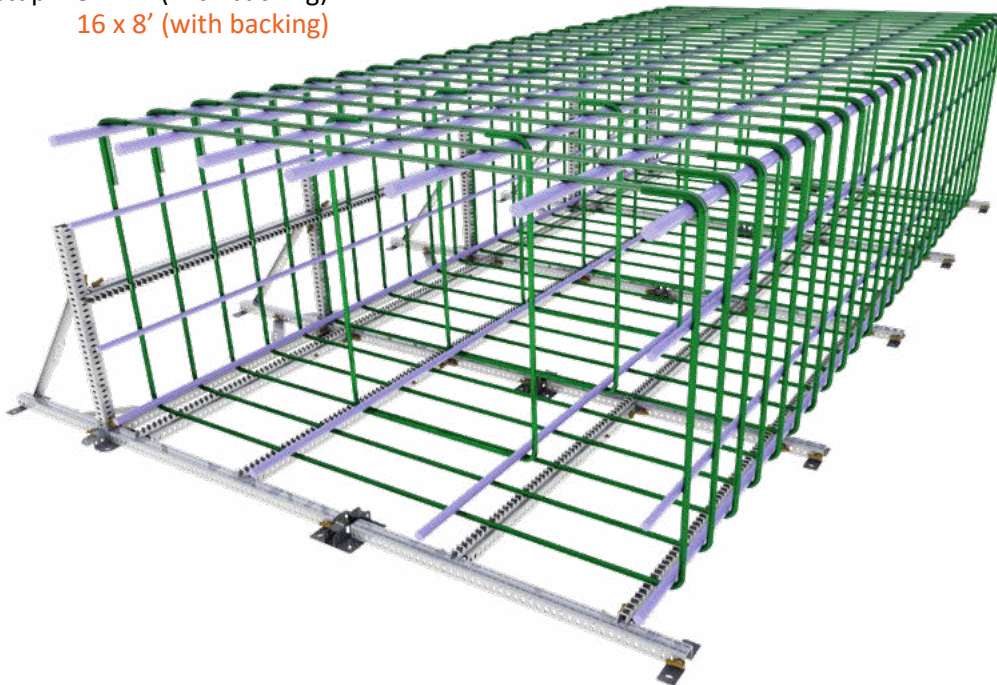
The SKEW JIG Floor Setup is ideal for making reinforcement elements that have a large surface. Reinforcement elements that contain many heavy rebar shapes, or a significant element height can also be made on this setup.



Floor Setup 6.0 x 2.4m
20 x 8'

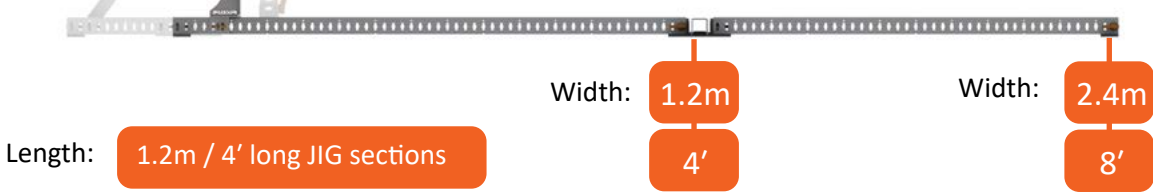
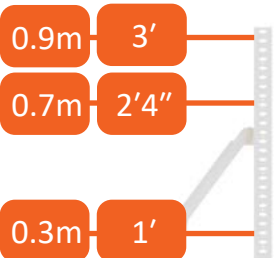


Floor Setup 4.8 x 2.4 (with backing)
16 x 8' (with backing)



Floor Setup size options:

Optional Backing:



Precast Structural Elements



Beams
Square Beams, T-beams
and Ground Beams



Columns
Columns with footings, Consoles etc.



Balcony Elements
Balcony Slabs and Precast Balconies



Staircases
Precast Stairs and Landings



Wall Elements
Wall Elements, Wall Edging,
Column Walls and Shear Walls



Beam Soffits
Beam Soffits and Floor Beams



Lift Shafts
Lift Shafts, Elevator Pits
and Elevator Core Shafts

 **SKEW**



Staircases





Beams



Columns



Wall Elements



Precast Infrastructure Elements



Box Culverts
Box Culverts and U Culverts



U Channels
U Channels, Drainage Channels
and small Culvert Systems



Retaining Walls
Retaining Walls, T-Walls and L-Walls



Barriers
Crash Barriers and Jersey Barriers



Slabs
Precast Concrete Slabs, Panels
and Floors



Bridge Elements
Bridge Beams, Bridge Columns and Girders



Railroad Elements
Level Crossing Slabs, Deck Units
and Station Platforms

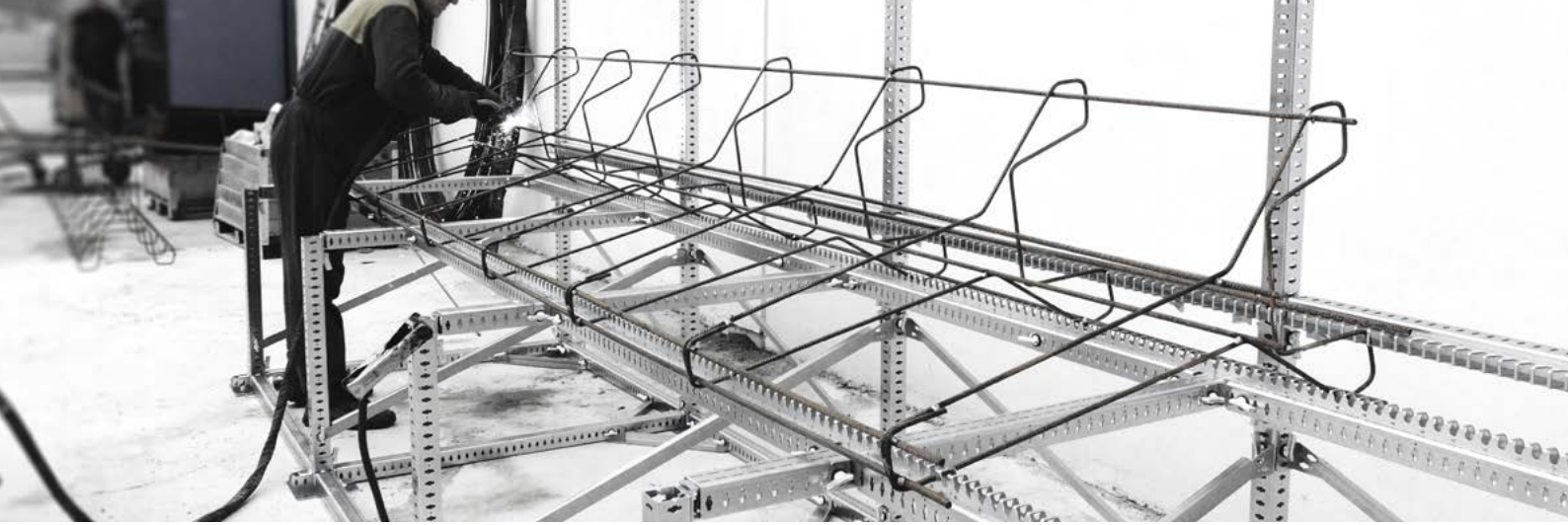


Box Culverts





Barriers



U Channels



Slabs



Typical Reinforcement Elements and Foundations



Ground Beams

Ground Beams, Foundation Beams and Connecting Beams



Reinforcement Edging

Wall Edging, Floor Edging, Corners and Connecting Reinforcement



Foundation Elements

Foundation Elements, Square Cages, Pocket Foundations and Spread Footings



Pile Caps

Pile Caps and Column Caps



Pile Cages

Round Pile Cages (individual rings)



Diaphragm Walls

Diaphragm Walls and Slurry Walls



Special Mesh

Special Mesh and Mats

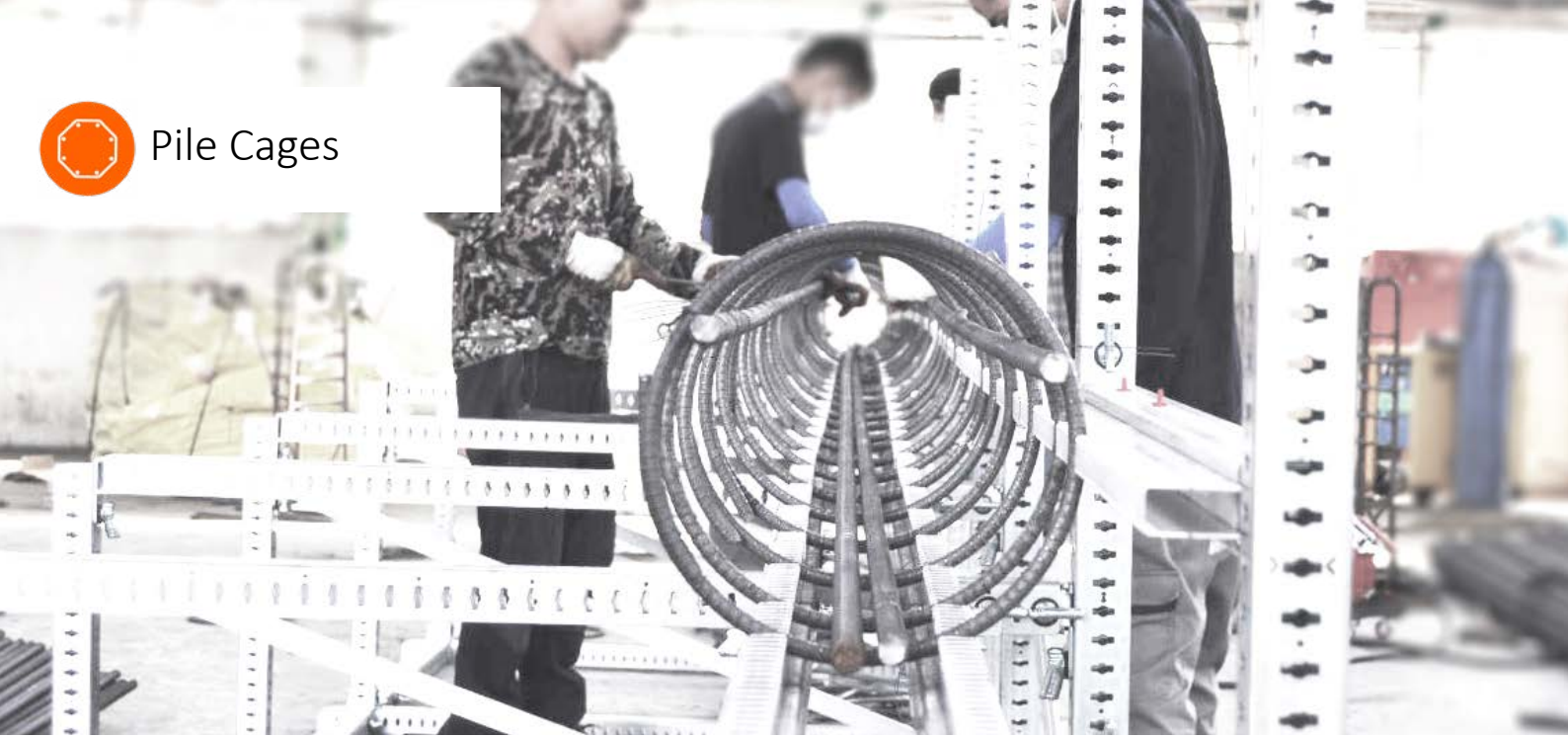


Diaphragm Walls

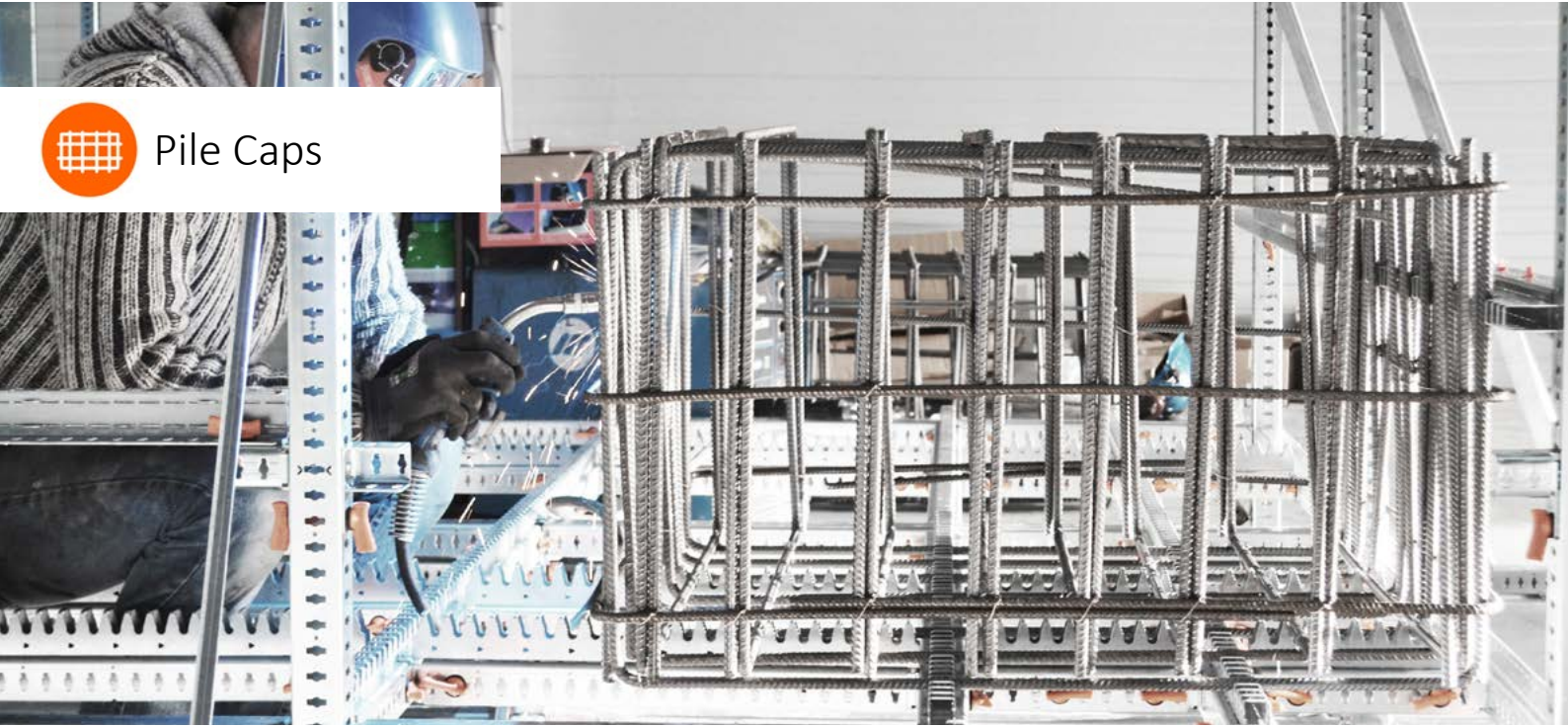




Pile Cages



Pile Caps



Special Mesh



What we offer:

SKEW offers a wide range of JIG System solutions:

- Standard JIG Setups
- Tailored JIGs
- Flexible JIG Packages
- Add-ons and Extensions
- Assembly Tooling
- Service and Support

GET YOUR PERSONAL
JIG PROPOSAL HERE!

www.skew.nl/contact

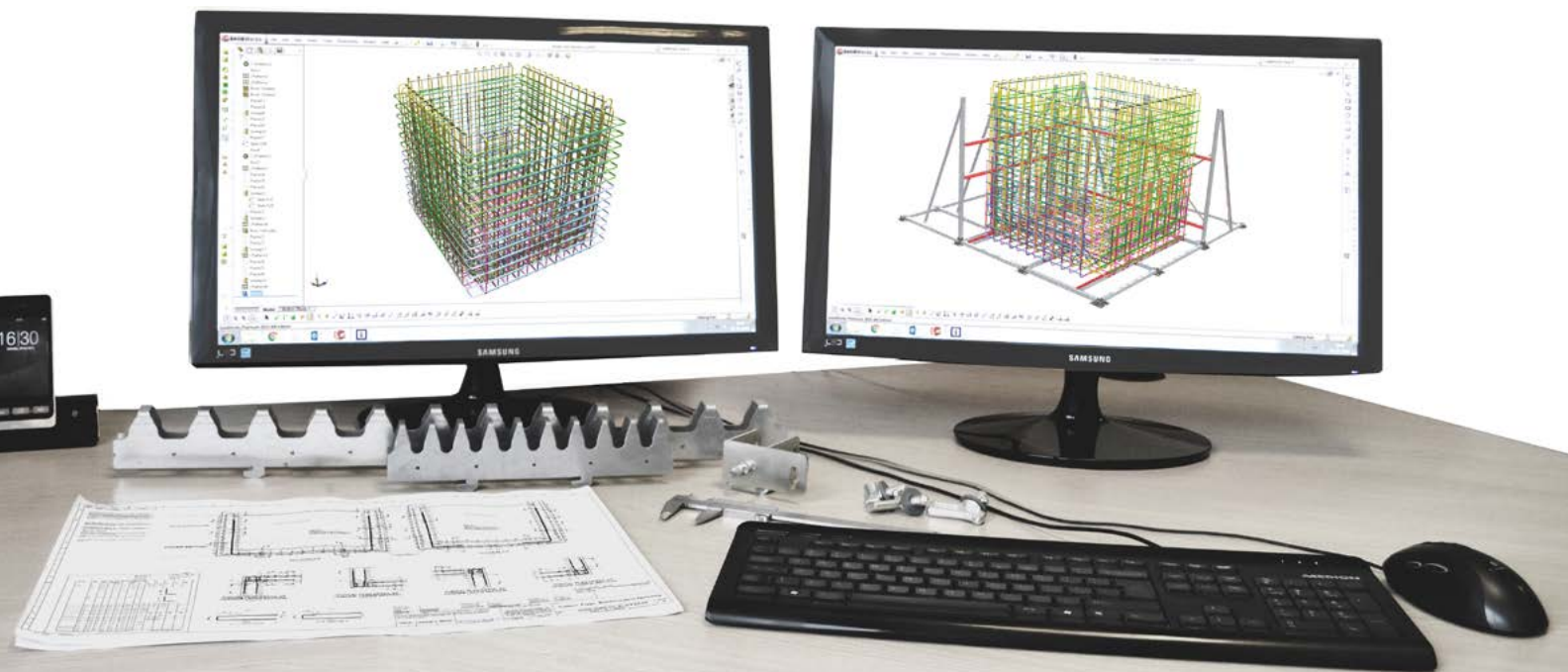
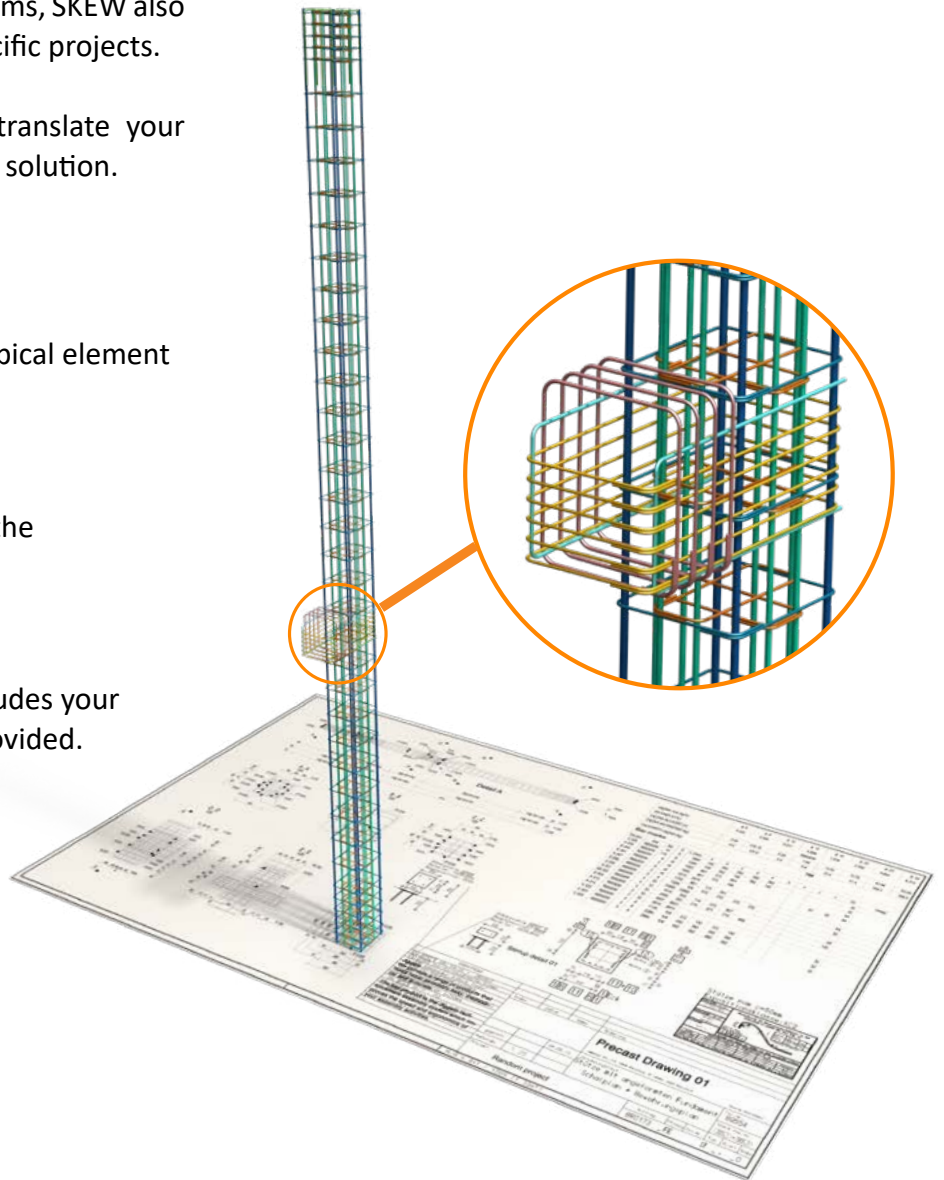


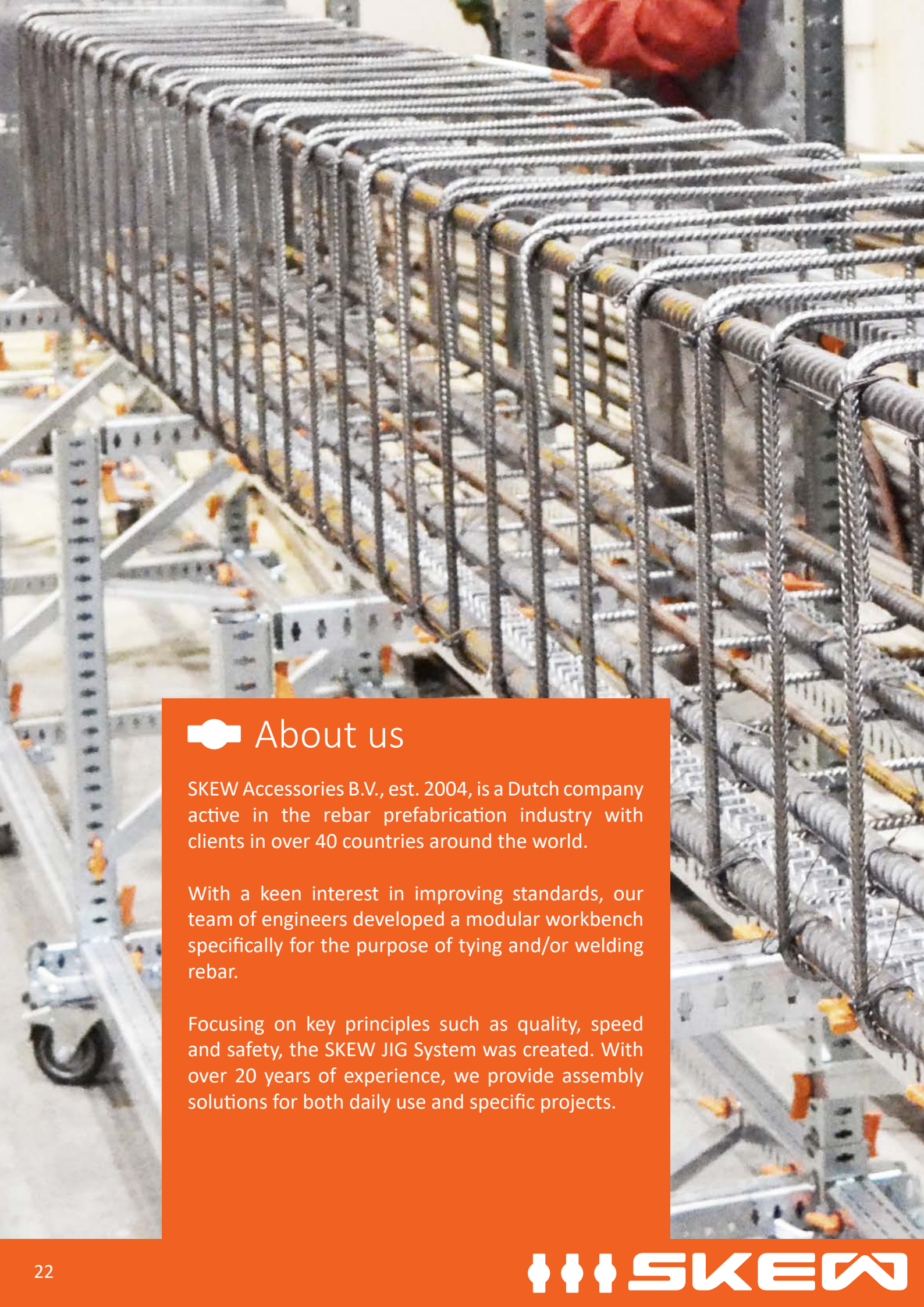
SKEW Engineering Services

In addition to standard JIG Systems, SKEW also offers custom solutions for specific projects.

Work with our engineers to translate your bespoke projects to a fitting JIG solution.

- 1. Provide a Drawing**
Send SKEW a drawing of your typical element or bespoke project
- 2. Analysis by SKEW**
Our engineering team analyses the reinforcement drawing.
- 3. Tailored JIG Proposal**
A detailed JIG proposal that includes your specific requirements will be provided.





About us

SKEW Accessories B.V., est. 2004, is a Dutch company active in the rebar prefabrication industry with clients in over 40 countries around the world.

With a keen interest in improving standards, our team of engineers developed a modular workbench specifically for the purpose of tying and/or welding rebar.

Focusing on key principles such as quality, speed and safety, the SKEW JIG System was created. With over 20 years of experience, we provide assembly solutions for both daily use and specific projects.



Reinforcement Assembly Solutions



SKEW

SKEW Accessories B.V.
Zonnenbergstraat 34 | 7384 DL Wilp | The Netherlands
Tel: +31 (0)571 260115
Website: www.skew.nl
Mail: info@skew.nl

